

ZENworks Asset Inventory - Adding Hardware to Inventory Reports

Asset Inventory allows you to scan and collect hardware data for devices in your Management Zone. The hardware data includes information such as keyboard, video adapter, CD/DVD, hard drive, and BIOS. Any hardware that cannot be categorized is listed as Other Hardware in the inventory report.

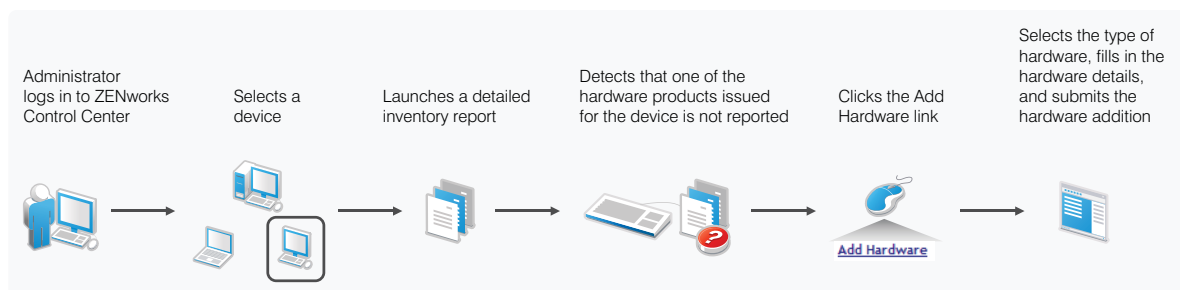
If a device has hardware that has not been reported through an inventory scan, you can manually add the hardware to the device's inventory report. The following sections explain how to perform this task:

- ◆ “Prerequisites” on page 1
- ◆ “Workflow Diagram” on page 1
- ◆ “Procedure” on page 2
- ◆ “Legal Notice” on page 2

Prerequisites

- ◆ Ensure that you have the Device Rights > Modify right for the device whose inventory report you want to add hardware to.
- ◆ Ensure that you have the View Detailed Inventory right to view software/ hardware details in the inventory report.

Workflow Diagram



Procedure

To manually add a hardware product to a device:

- 1 In ZENworks Control Center, click **Devices > Workstations**.
- 2 Select the workstation to which you want to add the hardware product, then click **Inventory**.
- 3 Click **Detailed Hardware/Software Inventory**.
- 4 Scroll to the bottom of the inventory report, then click **Add Hardware**.
- 5 On the Add Hardware page, select the type of hardware you want from the list. For example, select **Keyboard**.
- 6 Fill in the required details for the selected hardware, then click **Submit**.

The hardware is added to the Hardware section of the inventory report. Logical drive and Network Driver are listed separately under the respective sections in the inventory report.

Legal Notice

For information about legal notices, trademarks, disclaimers, warranties, export and other use restrictions, U.S. Government rights, patent policy, and FIPS compliance, see (<https://www.microfocus.com/en-us/legal>).

© Copyright 2008 - 2024 Open Text

The only warranties for products and services of Open Text and its affiliates and licensors (“Open Text”) are as may be set forth in the express warranty statements accompanying such products and services. Nothing herein should be construed as constituting an additional warranty. Open Text shall not be liable for technical or editorial errors or omissions contained herein. The information contained herein is subject to change without notice.