

Novell Vibe 4.0.1 Virtual Eval

March 2016



Introduction

Welcome to the Novell Vibe 4.0.1 Virtual Eval. This virtual image can be used as a demonstration or proof of concept of the capabilities of the Vibe product.

By following this Quick Start, and optionally the accompanying video, you can have a fully functioning Novell Vibe system up and running in your business environment within about 20 minutes. Users will be able to log in by using their eDirectory or Active Directory usernames and passwords. They will be able to receive e-mails with notifications of Vibe events in their mailboxes.

NOTE: Help links within the Vibe Virtual Eval appliance are not functional in this release of the Vibe Virtual Eval. Any help content beyond this quick start and the accompanying video is not provided.

The Vibe Virtual Eval is provided as a VMware, Hyper-V, or Xen appliance.

Downloading the Vibe Virtual Eval Appliance and Configuring the Virtual Environment

You need to download the Vibe Virtual Eval appliance and configure the virtual environment where you plan to run the appliance. This includes configuring system resources and so forth.

The process of downloading the Vibe Virtual Eval appliance and configuring the virtual environment differs, depending on which virtual environment you plan to use to run the Vibe appliance.

The steps in this quick start focus on deploying the Vibe Virtual Eval appliance using the VMware vSphere client. If you are deploying in another environment, use these steps as a guideline.

- 1 Download the Vibe software (`Vibe.x86_64-version.ovf.zip`) to your management workstation.
You can access the software from the [Novell Customer Center \(NCC\) \(https://www.novell.com/center\)](https://www.novell.com/center). Or, you can access an evaluation version of the software from the [Novell Downloads page \(http://download.novell.com\)](http://download.novell.com).
- 2 Extract the `Vibe.x86_64-version.ovf.zip` file on your management workstation so that the `Vibe-version` file folder appears.

- 3 In the vSphere client, click **File > Deploy OVF Template**.
- 4 Browse to and select the `.ovf` file in the `Vibe-version` file folder.
- 5 Click **Next**.
- 6 Click **Next** again.
- 7 In the **Name** field, rename the Vibe Virtual Eval appliance to a name of your choosing, then click **Next**.
- 8 Select the datastore where you want to store the virtual machine files, then click **Next**.
- 9 Click **Next** to accept the default for the disk format.
- 10 Click **Finish**.
- 11 (Optional) Upgrade the virtual machine hardware version to the latest that your infrastructure can support. To do so, in the vSphere client, right-click the virtual machine that you just created, and for which you want to upgrade the hardware, then click **Upgrade Virtual Hardware**.
- 12 Power on the appliance (virtual machine).
- 13 (Optional) Install VMware Tools on the host server.
- 14 Continue with [“Installing the Vibe Virtual Eval Appliance” on page 2](#).

Installing the Vibe Virtual Eval Appliance

- 1 After you have downloaded the Vibe appliance, configured the virtual environment, and powered on the appliance, click the **Console** tab.
- 2 After the appliance starts, select your preferred keyboard layout in the **Keyboard Language** drop-down, then accept the license agreement. (You can change the language that the license agreement is displayed in from the **License Language** drop-down.)

The Vibe Appliance Configuration page appears.



- 3 On the configuration page, specify the following information:

Root password and confirmation: The root password for your Vibe appliance. The root user name is case sensitive and should not be capitalized.

Vaadmin password and confirmation: The preferred user to use when logging in to the appliance. The user name is case sensitive and should not be capitalized.

NTP Server: The IP address or DNS name of the reliable external Network Time Protocol (NTP) server that your OES server uses. For example, time.example.com.

For the best results, set up NTP in accordance with the [VMware best practices guidelines \(http://kb.vmware.com/selfservice/microsites/search.do?language=en_US&cmd=displayKC&externalId=1006427\)](http://kb.vmware.com/selfservice/microsites/search.do?language=en_US&cmd=displayKC&externalId=1006427).

Region: Your local region.

Time Zone: Your local time zone.

- 4 Click **Next**.

- 5 On the network configuration page, specify the following network information:

Hostname: The fully qualified DNS host name associated with the appliance's IP address. For example, myVibe.mynetwork.example.com.

IP Address: The static IP address for the appliance. For example, 172.17.2.3.

Network Mask: The network mask associated with the appliance's IP address. For example, 255.255.255.0.

Gateway: The IP address of the gateway on the subnet where your Vibe virtual appliance is located. For example, 172.17.2.254.

DNS Servers: The IP address of a primary DNS server for your network. For example, 172.17.1.1.

Domain Search: The domain that is associated with the Vibe host name.

- 6 Click **Configure**.

A message indicating that the installation was successful is displayed.

- 7 Continue with the first-time configuration, as described in [\"Configuring the Vibe Appliance for the First Time\" on page 2](#).

Configuring the Vibe Appliance for the First Time

After you install the Novell Vibe Virtual Eval appliance and configure the network settings as described earlier, you are ready to configure the Vibe appliance for the first time. This configuration process uses a quick wizard that gets your Vibe evaluation system up and running.

To configure the Vibe Virtual Eval appliance:

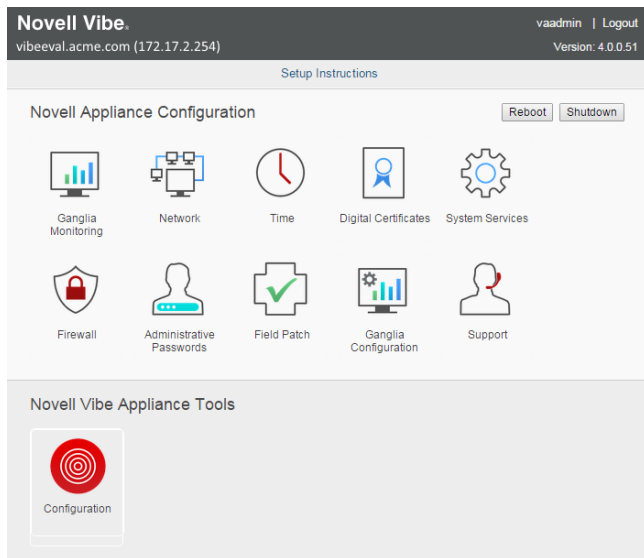
- 1 After you have installed the Novell Vibe Virtual Eval appliance, as described in [\"Installing the Vibe Virtual Eval Appliance\" on page 2](#), navigate to the following URL from a web browser:

`https://ip_address_or_DNS:9443`

Use the IP address or DNS name of the server that you specified during the appliance installation.

- 2 Log in to the appliance using the `vaadmin` user and the password that you set.

The Novell Vibe Appliance landing page is displayed.



- 3 Click the **Vibe Server Configuration** icon.



The Vibe Configuration Wizard is displayed.

- 4 Select **Small Deployment**, then click **Next**.
- 5 On the Database page, create a password for the MySQL administrator.
If you need to change this password at a later time, you must use the native MySQL tools to do so.
- 6 Click **Next**.
- 7 In the **Default Locale** field, select the default locale for your Vibe site. This is the language and locale that Vibe uses when users first log in to the Vibe site.
- 8 Click **Finish**.

After the configuration is complete, a summary is displayed.

This configuration summary contains information such as network, database, and so forth. You can modify these configuration settings at any time from the **Configuration** column on the left side of this page. However, because this is an evaluation, settings should not need to be modified.

- 9 You are now ready to access your Vibe site at the following URL:

`https://ip_address_or_DNS:8443`



- 10 Log in as the Vibe administrator. The default User ID is `admin`, and the default password is `admin`.
- 11 Continue with [“Manually Adding Users to Your Vibe Site”](#) on page 3.

Manually Adding Users to Your Vibe Site

Users can be added to Vibe either manually or through an LDAP directory. If you plan to use an existing LDAP directory, for instance eDirectory or Active Directory, then skip to the next section. Continue with this section to add Vibe users manually.

- 1 Click your linked name in the upper right corner of the Vibe interface, then click **Administration Console**.
- 2 Under **Management**, click **Users**.
The Manage Users page is displayed.
- 3 Click **New**.
- 4 Specify the user information, then click **OK**.
- 5 Add additional users as needed.
- 6 When you have finished, click **Close** to return to the What's New page.

Adding LDAP Users to Your Vibe Site

You can import users into Vibe from an LDAP directory. Much of the information required to configure LDAP is available from your network administrator.

For information about how to add users to your Vibe site via LDAP, see [“Synchronizing Users and Groups from an LDAP Directory”](https://www.novell.com/documentation/vibe4/vibe4_admin/data/ldap.html) (https://www.novell.com/documentation/vibe4/vibe4_admin/data/ldap.html) in the *Novell Vibe Administration Guide* (https://www.novell.com/documentation/vibe4/vibe4_admin/data/bookinfo.html).

Accessing the Vibe Resource Library

The Novell Vibe Resource Library provides a collection of existing Vibe folder entry forms, workflows, and landing pages that have been designed to solve specific business problems. You can easily download the custom forms and

workflows, then import them into your Vibe environment. You can further customize these forms and workflows to suit your individual business needs.

- 1 You can easily access the Vibe Resource Library by clicking your linked name in the upper right corner of the Vibe interface, then clicking **Vibe Resource Library**.

Conclusion

You should now have a working Vibe server running on your network. If you configured LDAP synchronization, any user within the synchronized LDAP context can log in to the Vibe site, assuming that you have the correct number of Vibe licences.

You can now start to use Vibe.

Complete product documentation is found at the [Novell Vibe 4 Documentation website \(http://www.novell.com/documentation/vibe4\)](http://www.novell.com/documentation/vibe4).

Have fun with Novell Vibe!

Legal Notice: For information about legal notices, trademarks, disclaimers, warranties, export and other use restrictions, U.S. Government rights, patent policy, and FIPS compliance, see <https://www.novell.com/company/legal/>.

Copyright © 2016 Novell, Inc. All Rights Reserved.